

## Wheelabrator

### **American Bridge chooses Wheelabrator 8 Wheel Roll/Conveyor/Monorail for new Reedsport, Oregon facility**

Burlington, ONTARIO – American Bridge Manufacturing Company (ABM), founded in 1870, fabricates structural steel for bridges and industrial uses. With operations throughout the USA and abroad, the company recently opened a new facility on the Umpqua River in Reedsport, Oregon. ABM specializes in high man-hour per ton manufacturing, producing products for the repair and rehabilitation of steel bridges, steel grid bridge deck products, complex new bridges, and industrial structural fabrications. The company also provides CAD based steel bridge and structural steel detailing services in house and for outside customers. ABM has been operating a Wheelabrator® 8 wheel roll conveyor/monorail for some time at their main plant in Coraopolis, Penn. When the company decided to build a West Coast facility, Wheelabrator salesman Kevin Poling contacted ABM about machine requirements and he stayed in touch until the project was finished. The new machine, which is almost identical to the original Wheelabrator machine in Coraopolis, Penn., was installed in the Reedsport facility in May 2003.

Oren Sanders, Facility Manager at Reedsport, states, "Our Autoblast® descaling machine runs four to six hours a day. We are very happy with the machine and the level of service from Wheelabrator." He continues, "ABM chose to install this Wheelabrator machine as a direct response to the first machine in Coraopolis, where Wheelabrator's level of service has been excellent. Anytime they had a problem in Coraopolis, Wheelabrator responded immediately to correct the situation. ABM knew that the same level of service would be provided to the Reedsport facility."

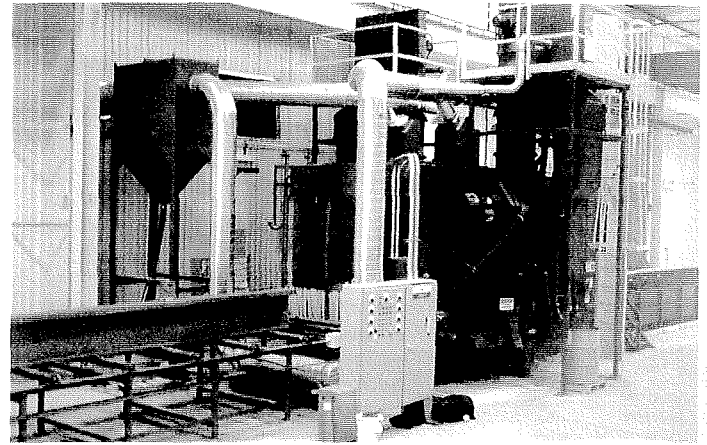
This specialized structural roll conveyor/monorail handles materials four feet wide by five feet high, and descales steel while providing an anchor profile for coating. The machine can also handle larger structural pieces – up to eight feet high – by turning them over and running them through the machine in two passes. ABM utilizes a mixture of shot and grit in order to provide the profile needed for paint.

The Wheelabrator 8 wheel roll conveyor/monorail offers versatility and adaptability to accommodate a variety of product styles, shapes and cleaning speeds. The machine features eight 25 hp, 15-inch direct drive, eight bladed Autoblast wheels with TargetLok® control cages and V Lok blades. The TargetLok® control cage adapter allows blast patterns to be set once, and simply reset after a tune up is performed.

Introduced in 1908, Wheelabrator blast cleaning and surface preparation equipment, an International Surface

Preparation Corporation technology, is one of the most recognized brands in the industry. Wheelabrator designs cover a full line of blast cleaning equipment and systems suitable for a variety of finishing requirements. For more information on Wheelabrator visit the web site at [www.surfacepreparation.com](http://www.surfacepreparation.com) or e-mail [wheelabrator@surfacepreparation.com](mailto:wheelabrator@surfacepreparation.com).

Wheelabrator® is a registered trademark of Wheelabrator Technologies, Inc. Autoblast and Targetlok are registered trademarks owned by International Surface Preparation Corporation.



*Wheelabrator 8 Wheel Roll Conveyor/Monorail at American Bridge.*